

CORRECTION

Open Access



Correction: Triglyceride-glucose index predicts postoperative delirium in elderly patients with type 2 diabetes mellitus: a retrospective cohort study

Miao Sun^{1,2†}, Min Liu^{2,3†}, Faqiang Zhang^{2,4†}, Lijuan Sang¹, Yuxiang Song¹, Peng Li¹, Siyuan Liu¹, Huikai Yang¹, Libin Ma¹, Jiangbei Cao¹, Weidong Mi^{1,2*} and Yulong Ma^{1,2*}

Correction: *Lipids Health Dis* 23, 107 (2024)
<https://doi.org/10.1186/s12944-024-02084-2>

Following publication of the original article [1], the authors noticed that Figure 2 is incorrect. The correct figure 2 is shown below.

The original article [1] has been updated.

[†]Miao Sun, Min Liu and Faqiang Zhang contributed equally to this work.

The original article can be found online at <https://doi.org/10.1186/s12944-024-02084-2>.

*Correspondence:

Weidong Mi
wwd1962@163.com

Yulong Ma
yulongma123@163.com

¹ Department of Anesthesiology, The First Medical Center of Chinese PLA General Hospital, Beijing 100730, China

² Nation Clinical Research Center for Geriatric Diseases, Chinese PLA General Hospital, Beijing 100730, China

³ Department of Anesthesiology, Beijing Tongren Hospital, Capital Medical University, Beijing 100730, China

⁴ Department of Anesthesiology, Shanghai Pulmonary Hospital, School of Medicine, Tongji University, Shanghai 200433, China



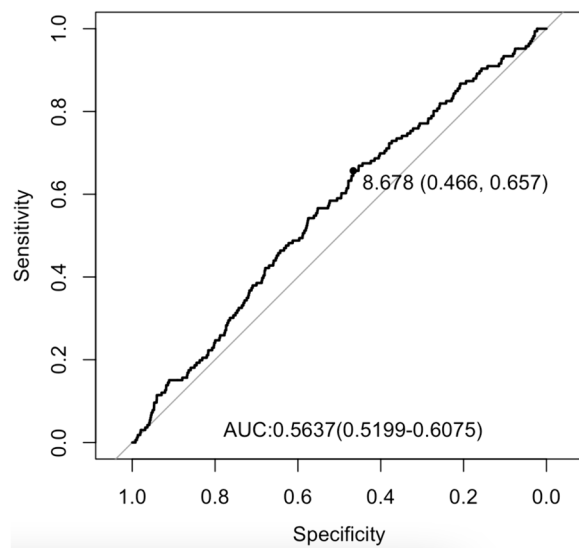


Fig. 2 ROC curve of TyG index for predicting POD in surgical elderly patients with T2DM. The optimal cut-off point was 8.678 with specificity and sensitivity of 44.6% and 65.7% (area under the curve 0.5637, 95% CI: 0.5199 to 0.6075). ROC, receiver operating characteristic; TyG: triglyceride-glucose; POD, postoperative delirium; T2DM, type 2 diabetes mellitus; CI, confidence interval

Published online: 30 April 2024

Reference

1. Sun M, Liu M, Zhang F, et al. Triglyceride-glucose index predicts postoperative delirium in elderly patients with type 2 diabetes mellitus: a retrospective cohort study. *Lipids Health Dis.* 2024;23:107. <https://doi.org/10.1186/s12944-024-02084-2>.